

FITTING MANUAL

COVERS OEC Liquid Logistics Solutions Shark Tank



Equipment Requirements:

Flexitank carton will be supplied with all necessary equipment need to fit the container. Lining material is HPDE and will be supplied by OEC/LLS. Alternative lining material will be cardboard and sourced locally if needed.

Fitting Depot will be required to supply the following tools

- ☒ 20' container passing OEC/LLS container selection process
- ☒ 24" shop broom
- ☒ Claw hammer or crowbar (any alternative source for removing nails or screws)
- ☒ 1 razor knife (with safety blade)
- ☒ 14MM (9/16") wrench or impact drive
- ☒ Two piece framed bulkhead and facing supplied separately

All questions regarding this manual or required equipment should be directed to a member of OEC / LLS technical team.

REVISIONS

Revision	Date	Description	Manual Reference
A	Dec. 28 2019	Flexitank Install	OECLLS FI001

MANUAL SCOPE

The following manual is a OEC Liquid Logistics Solutions standard operating procedure covering all elements to successfully install a Shark flexitank to our standard.

OEC LLS will not held liable for installation errors that occur from any deviation from the standard operating procedure described in this manual.

CONTAINER PREPARATION

- A Remove all debris for container floor via a broom sweeping or using a lawn blower.



- B Check floor for nails or screws protruding up from container floor using the back surface of the 24" shop broom.



- C All lashing rings at floor level will need to be covered with strips 11"x5" cardboard cut from flexitank carton.



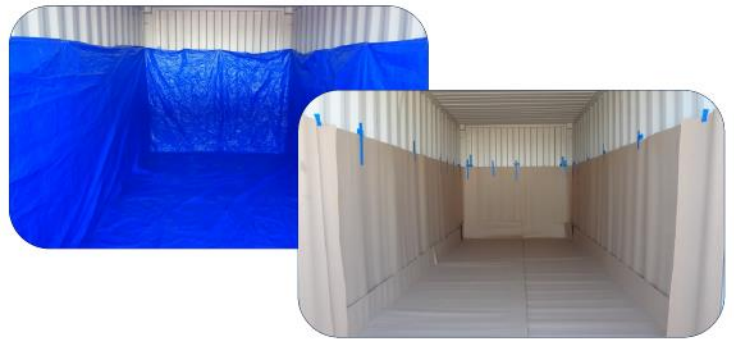
- D Corner lashing rings will need to be protected using 2 x fluted plastic sheets 60"x21.5" (one folder in half, placed in corner & one covering weld seams)
Fluted plastic supplied inside flexitank carton.



OEC LLS will be using 2 forms of wall lining material 1st and primary is an HPDE magnetic liner supplied inside the flexitank carton.

E

cardboard is back up only.



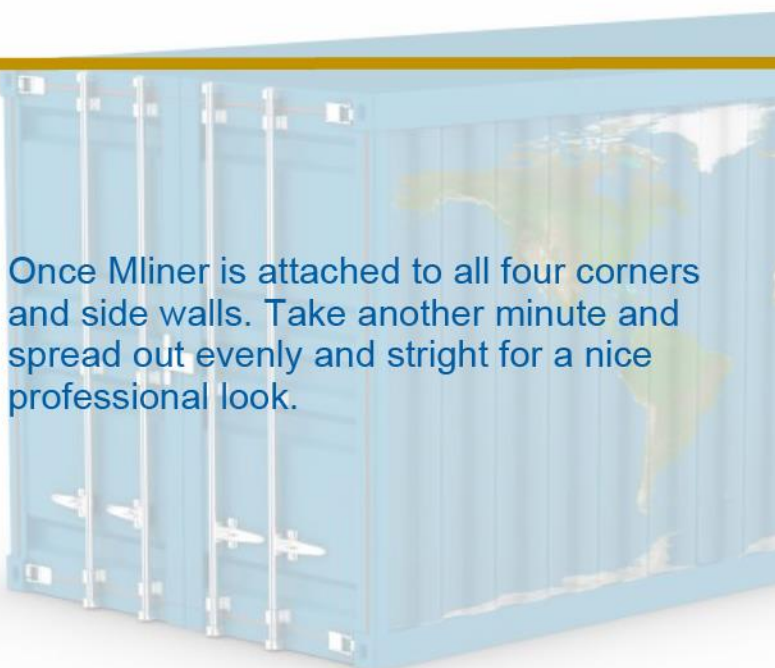
Lining the wall will need to begin at the rear edge (doors). Continue to unroll lining to front wall. Open up lining to each side wall. Find the seams and place them into corners. Magnets will attach to metal side of container holding liner. Pick a side and work your way down the wall placing the magnets about eye level 60"/70" high then repeat.

F



Once Mliner is attached to all four corners and side walls. Take another minute and spread out evenly and stright for a nice professional look.

G



FLEXITANK POSITIONING

H

Pull the magnets down on the rear corners. (doors)
This will lower the front part of the Mliner to allow you step over with the flexitank and place into position.
Flexitank should be placed on the right side container wall on the 1st weld seam between 5th & 6th corrugation.



I

Unfold from the right to the left side wall.
Flexitank should be laying equally spaced up against both side walls.
Black indication lines should be located 3" from door recess.



J

Remove bubble wrap from valve and dust cap, internal cap. Place the handle in the open position.
Stick the valve into the opening of the Mliner. Take the backing plate and slide it over the valve smooth side against tank surface. Apply a little pressure until you hear it click into place. This indicates the valve is locked into the backing plate.



E Take the cardboard facing and place into the container doorway.



F Reach inside and pull the backing plate and valve to the opening.
Run the supplied zip-ties through cardboard facing and backing plate.
(Do not zip them, until later)



G Install the two piece bulkhead frame and bar spacers.

(you will need a 11/16 socket)
This will loosen and tighten the bolts)



H Tie (double knot) all the blue webbing around bulkhead frame.
The 2 zip-ties can be tighten around the bulkhead frame now.

Reach inside and pull the Mliner over the cardboard facing onto the frame.

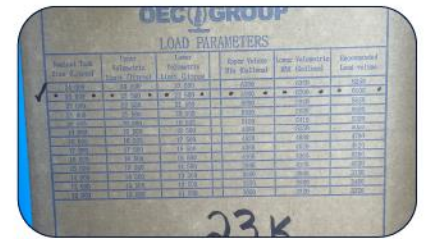


CONTAINER LINING

Place the small flexitank serial number label on the printed certificate of fitness.

I Mark the load parameters with the matching flexitank size.

Tape the container fitting checklist under the load parameters.



J Close the doors and place the caution label and tag on left hand door.



K Place an Attention label on each side of the container wall. The label located in the middle atleast 5' high or higher.

